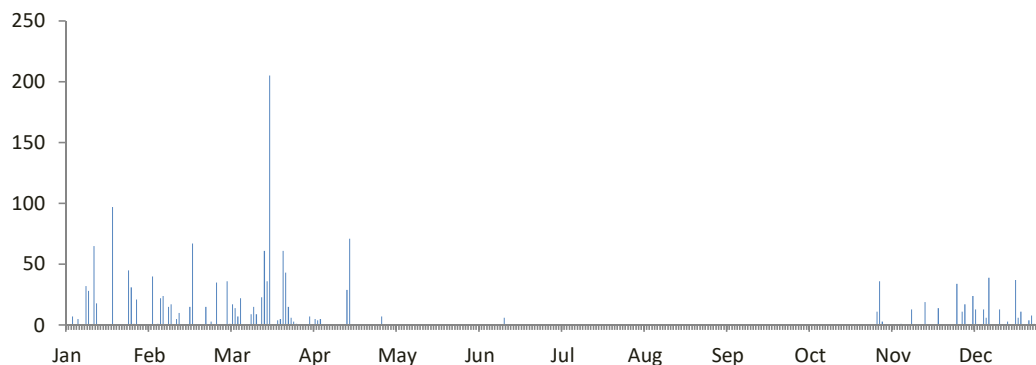


DATA CURAH HUJAN HARIAN

Nama Pos	: Merden	Provinsi	: Jawa tengah
Nomor Pos	: K 30 a	Kota/Kabupaten	: Kebumen
Jenis Alat	: Manual	Kecamatan	: Prembun
Koordinat	: 7 40' 39" LS-109 47' 42" BT	Desa/Kampung	: Bd. Merden
Elevasi	: + 12.5 m	Pengelola	: BPUSDATARU Probolo
SWS - DAS	: Badegolan	Didirikan	: Dinas PU Pengairan
Tahun Pendirian	: -	Tahun	: 2019

TANGGAL	BULAN (mm)											
	Jan	Feb	Mar	Apr	Mei	Jun	Jul	Ags	Sep	Okt	Nov	Des
1	0	0	0	0	0	0	0	0	0	0	11	34
2	0	40	36	7	0	0	0	0	0	0	36	0
3	7	0	1	0	0	0	0	0	0	0	3	11
4	0	1	17	5	0	0	0	0	0	0	0	17
5	5	22	14	4	0	0	0	0	0	0	0	0
6	0	24	7	5	0	0	0	0	0	0	0	0
7	0	0	22	0	0	0	0	0	0	0	0	24
8	32	15	0	0	0	0	0	0	0	0	0	13
9	28	17	0	0	0	0	0	0	0	0	0	0
10	0	0	0	0	0	0	0	0	0	0	1	0
11	65	5	9	0	0	0	0	0	0	0	0	13
12	18	10	15	0	0	0	0	0	0	0	0	6
13	0	0	9	0	0	0	0	0	0	0	0	39
14	0	0	0	0	0	6	0	0	0	0	13	0
15	0	0	23	0	0	0	0	0	0	0	0	0
16	0	15	61	29	0	0	0	0	0	0	0	0
17	0	67	36	71	0	0	0	0	0	0	0	13
18	97	0	205	0	0	0	0	0	0	0	0	0
19	0	0	0	0	0	0	0	0	0	0	19	0
20	0	0	0	0	0	0	0	0	0	0	0	3
21	0	0	4	0	0	0	0	0	0	0	0	0
22	0	15	5	0	0	0	0	0	0	0	0	0
23	0	0	61	0	0	0	0	0	0	0	0	37
24	45	3	43	0	0	0	0	0	0	0	14	6
25	31	0	15	0	0	0	0	0	0	0	0	11
26	1	35	6	0	0	0	0	0	0	0	0	0
27	21	0	3	0	0	0	0	0	0	0	0	0
28	0	0	1	0	0	0	0	0	0	0	0	4
29	0		0	7	0	0	0	0	0	0	0	8
30	0		0	0	0	0	0	0	0	0	0	1
31	0		0		0		0		0		0	0
Hujan Maks	97.0	67.0	205.0	71.0	0.0	6.0	0.0	0.0	0.0	0.0	36.0	39.0
Jml. Curah Hujan	350.0	269.0	593.0	128.0	0.0	6.0	0.0	0.0	0.0	0.0	97.0	240.0
Jml. Hari Hujan	11	13	21	7	0	1	0	0	0	0	7	16
Jml. data (1-15)	15	15	15	15	15	15	15	15	15	15	15	15
Jml. Hujan (1-15)	155.0	134.0	153.0	21.0	0.0	6.0	0.0	0.0	0.0	0.0	64.0	157.0
Jml. Data (16-31)	16	13	16	15	16	15	16	16	15	16	15	16
Jml. Hujan (16-31)	195.0	135.0	440.0	107.0	0.0	0.0	0.0	0.0	0.0	0.0	33.0	83.0
Tahunan	Hujan Maksimum			Jumlah Curah Hujan			Jumlah Hari Hujan			Hujan Ekstrim		
	205.0			1683.0			76			205		

GRAFIK HUJAN (mm)

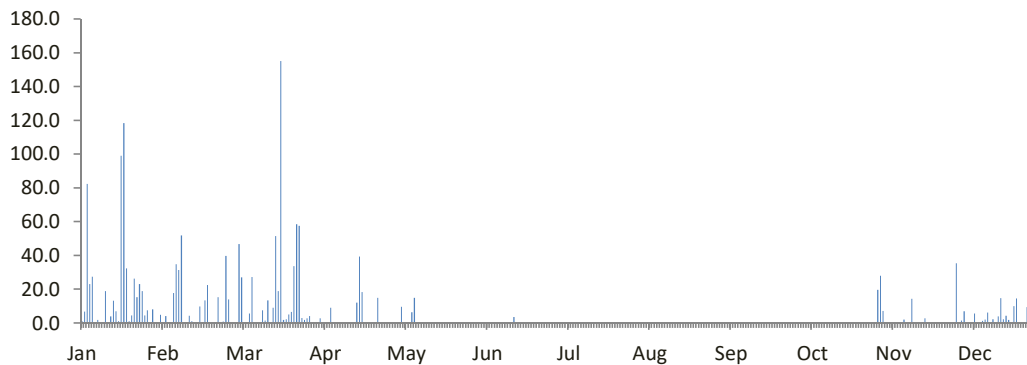


DATA CURAH HUJAN HARIAN

Nama Pos	: Kutoarjo PSDA	Provinsi	: Jawa tengah
Nomor Pos	: K 49	Kota/Kabupaten	: Purworejo
Jenis Alat	: Manual	Kecamatan	: Kutoarjo
Koordinat	: 7 44' 19" LS-109 54' 51" BT	Desa/Kampung	: Kutoarjo
Elevasi	: + 15 m	Pengelola	: BPUSDATARU Probolo
SWS - DAS	: Cokroyasan	Didirikan	: BBWS Serayu Opak
Tahun Pendirian	: -	Tahun	: 2019

TANGGAL	BULAN (mm)											
	Jan	Feb	Mar	Apr	Mei	Jun	Jul	Ags	Sep	Okt	Nov	Des
1	1.2	0.0	0.0	0.0	0.0	0.0	0.0	0.0	0.0	0.0	19.6	35.4
2	6.8	4.2	46.8	2.8	0.0	0.0	0.0	0.0	0.0	0.0	28.0	0.0
3	82.3	0.0	27.0	0.0	9.6	0.0	0.0	0.0	0.0	0.0	7.1	1.5
4	23.0	0.0	0.0	0.0	0.0	0.0	0.0	0.0	0.0	0.0	0.0	7.0
5	27.4	17.7	0.0	0.0	0.0	0.0	0.0	0.0	0.0	0.0	0.0	0.0
6	0.0	34.8	5.6	9.0	0.0	0.0	0.0	0.0	0.0	0.0	0.0	0.0
7	1.8	31.5	27.3	0.0	6.5	0.0	0.0	0.0	0.0	0.0	0.0	0.0
8	0.0	51.8	0.0	0.0	14.9	0.0	0.0	0.0	0.0	0.0	0.0	5.7
9	0.0	0.0	0.0	0.0	0.0	0.0	0.0	0.0	0.0	0.0	0.0	0.0
10	19.0	0.0	0.0	0.0	0.0	0.0	0.0	0.0	0.0	0.0	0.0	0.0
11	0.0	4.3	7.5	0.0	0.0	0.0	0.0	0.0	0.0	0.0	2.0	1.3
12	4.0	1.2	1.6	0.0	0.0	0.0	0.0	0.0	0.0	0.0	0.0	2.0
13	13.3	0.0	13.5	0.0	0.0	0.0	0.0	0.0	0.0	0.0	0.0	6.3
14	7.0	0.0	0.0	0.0	0.0	0.0	0.0	0.0	0.0	0.0	14.3	0.0
15	1.2	9.9	9.1	0.0	0.0	3.6	0.0	0.0	0.0	0.0	0.0	2.3
16	99.0	0.0	51.4	12.2	0.0	0.0	0.0	0.0	0.0	0.0	0.0	0.0
17	118.3	13.5	19.0	39.4	0.0	0.0	0.0	0.0	0.0	0.0	0.0	4.0
18	32.3	22.5	155.0	18.3	0.0	0.0	0.0	0.0	0.0	0.0	0.0	14.8
19	1.2	0.0	1.8	0.0	0.0	0.0	0.0	0.0	0.0	0.0	2.8	2.3
20	4.6	0.0	2.2	0.0	0.0	0.0	0.0	0.0	0.0	0.0	0.0	4.4
21	26.4	0.0	5.1	0.0	0.0	0.0	0.0	0.0	0.0	0.0	0.0	1.8
22	15.3	15.3	6.7	0.0	0.0	0.0	0.0	0.0	0.0	0.0	0.0	0.0
23	23.0	0.0	33.7	0.0	0.0	0.0	0.0	0.0	0.0	0.0	0.0	10.0
24	19.0	1.0	58.5	15.0	0.0	0.0	0.0	0.0	0.0	0.0	0.0	14.5
25	4.5	39.8	57.5	0.0	0.0	0.0	0.0	0.0	0.0	0.0	0.0	0.0
26	7.6	14.0	3.0	0.0	0.0	0.0	0.0	0.0	0.0	0.0	0.0	0.0
27	0.0	0.0	1.8	0.0	0.0	0.0	0.0	0.0	0.0	0.0	0.0	0.0
28	8.2	0.0	2.8	0.0	0.0	0.0	0.0	0.0	0.0	0.0	0.0	9.5
29	0.0		4.1	0.0	0.0	0.0	0.0	0.0	0.0	0.0	0.0	6.2
30	0.0		0.0	0.0	0.0	0.0	0.0	0.0	0.0	0.0	0.0	0.0
31	4.9		0.0		0.0		0.0		0.0			1.3
Hujan Maks	118.3	51.8	155.0	39.4	14.9	3.6	0.0	0.0	0.0	0.0	28.0	35.4
Jml. Curah Hujan	551.3	261.5	541.0	96.7	31.0	3.6	0.0	0.0	0.0	0.0	73.8	130.3
Jml. Hari Hujan	24	14	22	6	3	1	0	0	0	0	6	18
Jml. data (1-15)	15	15	15	15	15	15	15	15	15	15	15	15
Jml. Hujan (1-15)	187.0	155.4	138.4	11.8	31.0	3.6	0.0	0.0	0.0	0.0	71.0	61.5
Jml. Data (16-31)	16	13	16	15	16	15	16	16	15	16	15	16
Jml. Hujan (16-31)	364.3	106.1	402.6	84.9	0.0	0.0	0.0	0.0	0.0	0.0	2.8	68.8
Tahunan	Hujan Maksimum		Jumlah Curah Hujan			Jumlah Hari Hujan			Hujan Ekstrim			
	155.0		1689.2			94			245			

GRAFIK HUJAN (mm)

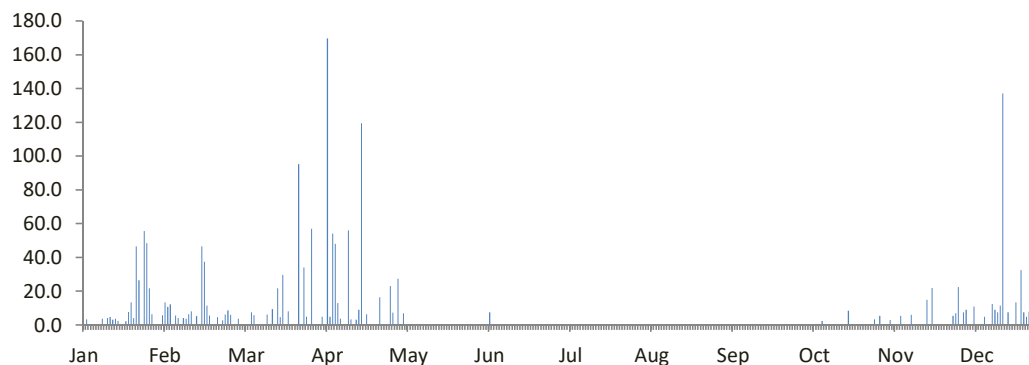


DATA CURAH HUJAN HARIAN

Nama Pos	: Badran	Provinsi	: Jawa Tengah
Nomor Pos	: K 87	Kota/Kabupaten	: Temanggung
Jenis Alat	: Manual	Kecamatan	: Secang
Koordinat	: 7 24' 26" LS-110 13' 5" BT	Desa/Kampung	: Badran
Elevasi	: + 430 m	Pengelola	: BPSDA Probolo
SWS - DAS	: Progo	Didirikan	: Dinas PU Pengairan
Tahun Pendirian	: -	Tahun	: 2019

TANGGAL	BULAN (mm)											
	Jan	Feb	Mar	Apr	Mei	Jun	Jul	Ags	Sep	Okt	Nov	Des
1	0.0	13.4	3.7	0.0	27.5	0.0	0.0	0.0	0.0	0.0	5.5	22.5
2	3.5	10.7	0.0	5.0	0.0	0.0	0.0	0.0	0.0	0.0	0.0	0.0
3	0.0	12.3	0.0	0.0	7.0	0.0	0.0	0.0	0.0	0.0	0.0	7.5
4	0.0	0.0	0.0	169.5	0.0	0.0	0.0	0.0	0.0	0.0	0.0	9.0
5	0.0	5.7	0.0	5.0	0.0	7.5	0.0	0.0	0.0	0.0	3.0	0.0
6	0.0	4.2	7.5	54.2	0.0	0.0	0.0	0.0	0.0	0.0	0.0	0.0
7	0.0	0.0	5.8	48.0	0.0	0.0	0.0	0.0	0.0	0.0	0.0	11.0
8	3.8	4.2	0.0	13.0	0.0	0.0	0.0	0.0	0.0	0.0	0.0	0.0
9	0.0	3.8	0.0	3.7	0.0	0.0	0.0	0.0	0.0	0.0	5.5	0.0
10	4.2	6.5	0.0	0.0	0.0	0.0	0.0	0.0	0.0	2.5	0.0	0.0
11	4.8	8.2	0.0	0.0	0.0	0.0	0.0	0.0	0.0	0.0	0.0	5.0
12	3.2	0.0	6.3	56.0	0.0	0.0	0.0	0.0	0.0	0.0	0.0	0.0
13	3.7	5.3	0.0	3.5	0.0	0.0	0.0	0.0	0.0	0.0	6.0	0.0
14	2.5	0.0	9.5	0.0	0.0	0.0	0.0	0.0	0.0	0.0	0.0	12.5
15	0.0	46.5	0.0	3.2	0.0	0.0	0.0	0.0	0.0	0.0	0.0	9.0
16	0.0	37.4	21.8	9.0	0.0	0.0	0.0	0.0	0.0	0.0	0.0	7.5
17	2.3	11.5	4.7	119.5	0.0	0.0	0.0	0.0	0.0	0.0	0.0	11.5
18	7.8	5.7	29.7	0.0	0.0	0.0	0.0	0.0	0.0	0.0	0.0	137.0
19	13.4	0.0	0.0	6.5	0.0	0.0	0.0	0.0	0.0	0.0	15.0	0.0
20	4.2	0.0	8.2	0.0	0.0	0.0	0.0	0.0	0.0	8.5	0.0	7.5
21	46.5	4.8	0.0	0.0	0.0	0.0	0.0	0.0	0.0	0.0	22.0	0.0
22	26.5	0.0	0.0	0.0	0.0	0.0	0.0	0.0	0.0	0.0	0.0	0.0
23	0.0	2.8	0.0	0.0	0.0	0.0	0.0	0.0	0.0	0.0	0.0	13.5
24	55.7	6.2	95.2	16.5	0.0	0.0	0.0	0.0	0.0	0.0	0.0	0.0
25	48.5	8.7	0.0	0.0	0.0	0.0	0.0	0.0	0.0	0.0	0.0	32.5
26	21.8	6.0	34.0	0.0	0.0	0.0	0.0	0.0	0.0	0.0	0.0	7.5
27	6.5	0.0	5.0	0.0	0.0	0.0	0.0	0.0	0.0	0.0	0.0	5.0
28	0.0	0.0	0.0	23.0	0.0	0.0	0.0	0.0	0.0	0.0	0.0	8.0
29	0.0		57.0	7.3	0.0	0.0	0.0	0.0	0.0	0.0	5.5	0.0
30	0.0		0.0	0.0	0.0	0.0	0.0	0.0	0.0	3.5	7.0	7.0
31	5.8		0.0		0.0		0.0		0.0			12.0
Hujan Maks	55.7	46.5	95.2	169.5	27.5	7.5	0.0	0.0	0.0	8.5	22.0	137.0
Jml. Curah Hujan	264.7	203.9	288.4	542.9	34.5	7.5	0.0	0.0	0.0	14.5	69.5	325.5
Jml. Hari Hujan	18	19	13	16	2	1	0	0	0	3	8	18
Jml. data (1-15)	15	15	15	15	15	15	15	15	15	15	15	15
Jml. Hujan (1-15)	25.7	120.8	32.8	361.1	34.5	7.5	0.0	0.0	0.0	2.5	20.0	76.5
Jml. Data (16-31)	16	13	16	15	16	15	16	16	15	16	15	16
Jml. Hujan (16-31)	239.0	83.1	255.6	181.8	0.0	0.0	0.0	0.0	0.0	12.0	49.5	249.0
Tahunan	Hujan Maksimum			Jumlah Curah Hujan			Jumlah Hari Hujan			Hujan Ekstrim		
	169.5			1751.4			98			205		

GRAFIK HUJAN (mm)

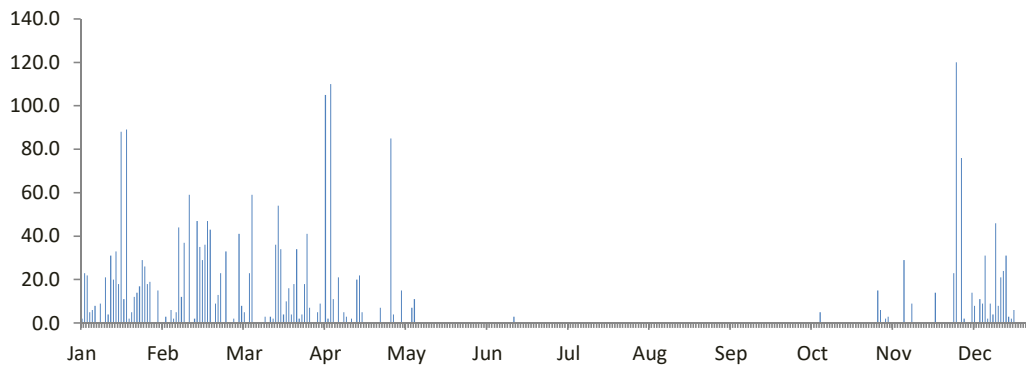


DATA CURAH HUJAN HARIAN

Nama Pos	: Sawangan	Provinsi	: Jawa Tengah
Nomor Pos	: K 99	Kota/Kabupaten	: Magelang
Jenis Alat	: Manual	Kecamatan	: Sawangan
Koordinat	: 7 32' 51.6" LS-110 18' 38.2" BT	Desa/Kampung	: Sawangan
Elevasi	: + 497 m	Pengelola	: BPSDA Probolo
SWS - DAS	: Progo	Didirikan	: Dinas PU Pengairan
Tahun Pendirian	: -	Tahun	: 2019

TANGGAL	BULAN (mm)											
	Jan	Feb	Mar	Apr	Mei	Jun	Jul	Ags	Sep	Okt	Nov	Des
1	2.0	0.0	0.0	5.0	0.0	0.0	0.0	0.0	0.0	0.0	15.0	120.0
2	23.0	3.0	41.0	9.0	0.0	0.0	0.0	0.0	0.0	0.0	6.0	0.0
3	22.0	0.0	8.0	0.0	15.0	0.0	0.0	0.0	0.0	0.0	0.0	76.0
4	5.0	6.0	5.0	105.0	0.0	0.0	0.0	0.0	0.0	0.0	2.0	2.0
5	6.0	2.0	0.0	2.0	0.0	0.0	0.0	0.0	0.0	0.0	3.0	0.0
6	8.0	5.0	23.0	110.0	0.0	0.0	0.0	0.0	0.0	0.0	0.0	0.0
7	0.0	44.0	59.0	11.0	7.0	0.0	0.0	0.0	0.0	0.0	0.0	14.0
8	9.0	12.0	0.0	0.0	11.0	0.0	0.0	0.0	0.0	0.0	0.0	8.0
9	0.0	37.0	0.0	21.0	0.0	0.0	0.0	0.0	0.0	0.0	0.0	0.0
10	21.0	0.0	0.0	0.0	0.0	0.0	0.0	0.0	0.0	5.0	0.0	11.0
11	4.0	59.0	0.0	5.0	0.0	0.0	0.0	0.0	0.0	0.0	29.0	9.0
12	31.0	0.0	3.0	3.0	0.0	0.0	0.0	0.0	0.0	0.0	0.0	31.0
13	20.0	2.0	0.0	0.0	0.0	0.0	0.0	0.0	0.0	0.0	0.0	2.0
14	33.0	47.0	3.0	2.0	0.0	0.0	0.0	0.0	0.0	0.0	9.0	9.0
15	18.0	35.0	2.0	0.0	0.0	3.0	0.0	0.0	0.0	0.0	0.0	4.0
16	88.0	29.0	36.0	20.0	0.0	0.0	0.0	0.0	0.0	0.0	0.0	46.0
17	11.0	36.0	54.0	22.0	0.0	0.0	0.0	0.0	0.0	0.0	0.0	8.0
18	89.0	47.0	34.0	5.0	0.0	0.0	0.0	0.0	0.0	0.0	0.0	21.0
19	2.0	43.0	4.0	0.0	0.0	0.0	0.0	0.0	0.0	0.0	0.0	24.0
20	5.0	0.0	10.0	0.0	0.0	0.0	0.0	0.0	0.0	0.0	0.0	31.0
21	12.0	9.0	16.0	0.0	0.0	0.0	0.0	0.0	0.0	0.0	0.0	3.0
22	14.0	13.0	4.0	0.0	0.0	0.0	0.0	0.0	0.0	0.0	0.0	2.0
23	17.0	23.0	18.0	0.0	0.0	0.0	0.0	0.0	0.0	0.0	14.0	6.0
24	29.0	0.0	34.0	0.0	0.0	0.0	0.0	0.0	0.0	0.0	0.0	0.0
25	26.0	33.0	2.0	7.0	0.0	0.0	0.0	0.0	0.0	0.0	0.0	0.0
26	18.0	0.0	4.0	0.0	0.0	0.0	0.0	0.0	0.0	0.0	0.0	0.0
27	19.0	0.0	18.0	0.0	0.0	0.0	0.0	0.0	0.0	0.0	0.0	0.0
28	0.0	2.0	41.0	0.0	0.0	0.0	0.0	0.0	0.0	0.0	0.0	5.0
29	0.0		7.0	85.0	0.0	0.0	0.0	0.0	0.0	0.0	0.0	0.0
30	15.0		0.0	4.0	0.0	0.0	0.0	0.0	0.0	0.0	23.0	0.0
31	0.0		0.0		0.0			0.0		0.0		0.0
Hujan Maks	89.0	59.0	59.0	110.0	15.0	3.0	-	0.0	0.0	5.0	29.0	120.0
Jml. Curah Hujan	547.0	487.0	426.0	416.0	33.0	3.0	-	0.0	0.0	5.0	101.0	432.0
Jml. Hari Hujan	26	20	22	16	3	1	-	0	0	1	8	20
Jml. data (1-15)	15	15	15	15	15	15	-	15	15	15	15	15
Jml. Hujan (1-15)	202.0	252.0	144.0	273.0	33.0	3.0	-	0.0	0.0	5.0	64.0	286.0
Jml. Data (16-31)	16	13	16	15	16	15	-	16	15	16	15	16
Jml. Hujan (16-31)	345.0	235.0	282.0	143.0	0.0	0.0	-	0.0	0.0	0.0	37.0	146.0
Tahunan	Hujan Maksimum		Jumlah Curah Hujan			Jumlah Hari Hujan			Hujan Ekstrim			
	-		-			-			177			

GRAFIK HUJAN (mm)

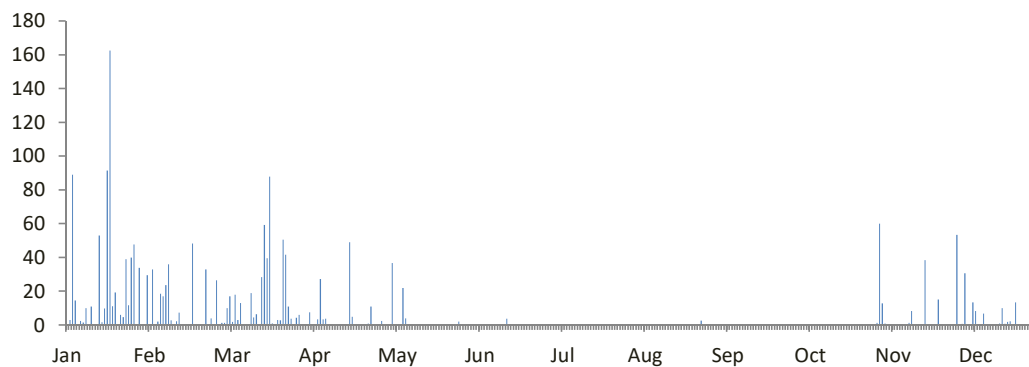


DATA CURAH HUJAN HARIAN

Nama Pos	: Pejengkolan	Provinsi	: Jawa tengah
Nomor Pos	: -	Kota/Kabupaten	: Kebumen
Jenis Alat	: Manual dan Otomatis	Kecamatan	: Padureso
Koordinat	: 7 40' 18" LS-109 46' 20" BT	Desa/Kampung	: Pajengkolan
Elevasi	: -	Pengelola	: BPUSDATARU Probolo
SWS - DAS	: Badegolan	Didirikan	: Dinas PU Pengairan
Tahun Pendirian	: -	Tahun	: 2019

TANGGAL	BULAN (mm)											
	Jan	Feb	Mar	Apr	Mei	Jun	Jul	Ags	Sep	Okt	Nov	Des
1	0	0	1.4	0	0	0	0	0	0	0	1.4	53.4
2	3	33	10	7.5	0	0	0	0	0	0	60	0
3	89	0	17	0	36.7	0	0	0	0	0	12.8	0.7
4	14.6	2.1	1.8	0	0	0	0	0	0	0	1	30.6
5	0	18.5	18	3.5	0	0	0	0	0	0	0.5	0
6	2.4	17	3.1	27.3	0	0	0	0	0	0	0	0
7	1.5	23.7	13	3.5	22	0	0	0	0	0	0	13.4
8	10	36	0	3.8	4	0	0	0	0	0	0	8.3
9	0	2.8	0	0	0	0	0	0	0	0.5	0	0
10	11	0	0	0	0	0	0	0	0	0	0	0
11	0	2.2	19	0	0	0	0	0	0	0	0	6.8
12	0	7.3	4.6	0	0	0	0	0	0	0	0	0
13	53	0	6.5	0	0	0	0	0	0	0	1.4	0
14	1.7	0	0	0	0	0	0	0	0	0	8.4	0
15	9.8	0	28.3	0	0	3.7	0	0	0	0	0	0
16	91.5	0	59.3	0	0	0	0	0	0	0	0	0
17	162.4	48.3	39.6	49	0	0	0	0	0	0	0	1
18	11.2	0	87.8	5	0	0	0	0	0	0	0	10
19	19.4	0	1	0	0	0	0	0	0	0	38.5	0.7
20	0	0	0	0	0	0	0	0	0	0	0	1.9
21	6	0	3	0	0	0	0	0	0	0	0	2.2
22	4.8	33	2.8	0	0	0	0	0	0	0	0	0
23	39	0	50.5	0	0	0	0	0	0	0	0	13.5
24	11.8	4	41.6	1	0	0	0	0	0	0	15.2	0
25	40	0	11	11	0	0	0	0	0	0	0	0
26	47.7	26.5	3.8	0	0	0	0	0	0	0	0	0
27	0	0	0	0	0	0	0	2.7	0	0	0	0
28	33.8	1.3	4.3	0	2	0	0	0	0	0	0	0
29	0		6	2.5	0	0	0	0	0	0	0	2.1
30	0		0	0	0	0	0	0	0	0	0	2.1
31	29.6		0		0		0		0		0	1
Hujan Maks	162.4	48.3	87.8	49.0	36.7	3.7	0.0	2.7	0.0	0.5	60.0	53.4
Jml. Curah Hujan	693.2	255.7	433.4	114.1	64.7	3.7	0.0	2.7	0.0	0.5	139.2	147.7
Jml. Hari Hujan	22	14	23	10	4	1	0	1	0	1	9	15
Jml. data (1-15)	15	15	15	15	15	15	15	15	15	15	15	15
Jml. Hujan (1-15)	196.0	142.6	122.7	45.6	62.7	3.7	0.0	0.0	0.0	0.5	85.5	113.2
Jml. Data (16-31)	16	13	16	15	16	15	16	16	15	16	15	16
Jml. Hujan (16-31)	497.2	113.1	310.7	68.5	2.0	0.0	0.0	2.7	0.0	0.0	53.7	34.5
Tahunan	Hujan Maksimum			Jumlah Curah Hujan			Jumlah Hari Hujan			Hujan Ekstrim		
	162.4			1854.9			100			163		

GRAFIK HUJAN (mm)



DATA CURAH HUJAN HARIAN

Nama Pos	: Poncol Gelangan	Provinsi	: Jawa Tengah
Nomor Pos	: -	Kota/Kabupaten	: Magelang
Jenis Alat	: Manual	Kecamatan	: Magelang Utara
Koordinat	: 7 32' 57" LS-110 6' 10" BT	Desa/Kampung	: Gelangan
Elevasi	: + 180 m	Pengelola	: BPUSDATARU Probolo
SWS - DAS	: Progo	Didirikan	: Dinas PU Pengairan
Tahun Pendirian	: -	Tahun	: 2019

TANGGAL	BULAN (mm)											
	Jan	Feb	Mar	Apr	Mei	Jun	Jul	Ags	Sep	Okt	Nov	Des
1	0	21	9	13	3	0	0	0	0	0	32	44
2	11	3	0	3	0	0	0	0	0	0	62	0
3	11	0	0	0	22	0	0	0	0	2	2	10
4	3	7	24	49	0	0	0	0	0	0	0	0
5	7	3	0	56	0	0	0	0	0	0	4	0
6	0	3	4	14	1	0	0	0	0	0	0	2
7	38	2	23	1	2	0	0	0	0	0	0	13
8	80	2	0	22	0	0	0	0	0	0	0	33
9	0	71	0	0	14	0	0	0	0	0	0	9
10	12	31	0	0	0	0	0	0	0	0	0	8
11	21	43	11	0	0	0	0	0	0	0	49	9
12	24	0	4	0	0	0	0	0	0	0	0	1
13	88	3	8	12	0	0	0	0	0	0	8	0
14	37	0	8	2	0	0	0	0	0	0	23	3
15	3	48	3	1	0	0	0	0	0	0	0	18
16	40	28	23	0	0	0	0	0	0	0	0	2
17	20	44	35	13	0	0	0	0	0	0	0	88
18	60	3	1	34	0	0	0	0	0	0	0	38
19	66	1	0	0	0	0	0	0	0	0	13	5
20	70	24	34	0	0	0	0	0	0	1	0	38
21	16	22	5	0	0	0	0	0	0	0	14	1
22	43	5	2	0	0	0	0	0	0	0	0	0
23	20	0	10	0	0	0	0	0	0	0	0	37
24	12	58	90	26	0	0	0	0	0	0	0	0
25	11	0	0	10	0	0	0	0	0	0	0	0
26	25	3	9	0	0	0	0	0	0	0	1	17
27	55	9	8	0	0	0	0	0	0	0	0	3
28	8	3	1	2	0	0	0	0	0	0	0	0
29	0		5	37	0	0	0	0	0	0	0	0
30	49		0	23	0	0	0	0	0	0	3	0
31	0		11		0		0		0			0
Hujan Maks	88.0	71.0	90.0	56.0	22.0	0.0	0.0	0.0	0.0	2.0	62.0	88.0
Jml. Curah Hujan	830.0	437.0	328.0	318.0	42.0	0.0	0.0	0.0	0.0	3.0	211.0	379.0
Jml. Hari Hujan	26	23	22	17	5	0	0	0	0	2	11	20
Jml. data (1-15)	15	15	15	15	15	15	15	15	15	15	15	15
Jml. Hujan (1-15)	335.0	237.0	94.0	173.0	42.0	0.0	0.0	0.0	0.0	2.0	180.0	150.0
Jml. Data (16-31)	16	13	16	15	16	15	16	16	15	16	15	16
Jml. Hujan (16-31)	495.0	200.0	234.0	145.0	0.0	0.0	0.0	0.0	0.0	1.0	31.0	229.0
Tahunan	Hujan Maksimum			Jumlah Curah Hujan			Jumlah Hari Hujan			Hujan Ekstrim		
	90.0			2548.0			126			140		

GRAFIK HUJAN (mm)

