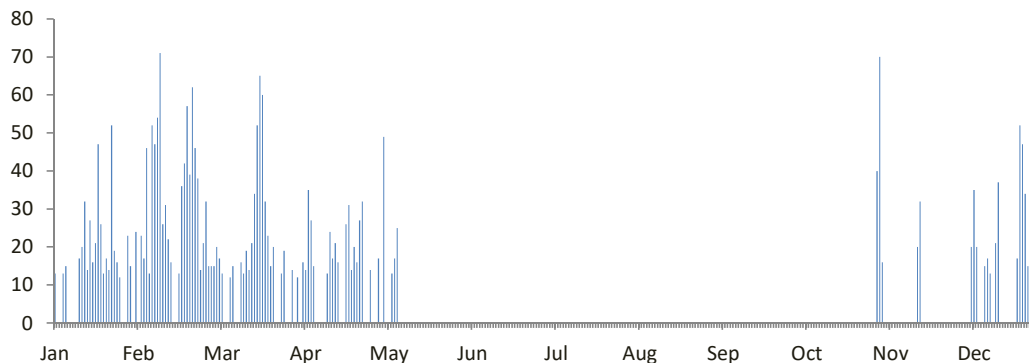


DATA CURAH HUJAN HARIAN

Nama Pos	: Lumbir (BBWS Serayu)	Provinsi	: Jawa Tengah
Nomor Pos	: 11	Kota/Kabupaten	: Banyumas
Jenis Alat	: Manual	Kecamatan	: Lumbir
Koordinat	: 7 26' 42.7" LS-108 57' 32.4" BT	Desa/Kampung	: Lumbir
Elevasi	: -	Pengelola	: BBWS Serayu Opak
SWS - DAS	: Serayu	Didirikan	: Balai PSDA Serayu Citanduy
Tahun Pendirian	: -	Tahun	: 2019

TANGGAL	BULAN (mm)											
	Jan	Feb	Mar	Apr	Mei	Jun	Jul	Ags	Sep	Okt	Nov	Des
1	13	0	15	12	17	0	0	0	0	0	0	-
2	0	23	20	0	0	0	0	0	0	0	40	0
3	0	17	17	16	49	0	0	0	0	0	70	-
4	13	46	13	14	0	0	0	0	0	0	16	-
5	15	13	0	35	0	0	0	0	0	0	0	-
6	0	52	0	27	13	0	0	0	0	0	0	0
7	0	47	12	15	17	0	0	0	0	0	0	20
8	0	54	15	0	25	0	0	0	0	0	0	35
9	0	71	0	0	0	0	0	0	0	0	0	20
10	17	26	0	0	0	0	0	0	0	0	0	0
11	20	31	16	0	0	0	0	0	0	0	0	-
12	32	22	13	13	0	0	0	0	0	0	0	15
13	14	16	19	24	0	0	0	0	0	0	0	17
14	27	0	14	17	0	0	0	0	0	0	0	13
15	16	0	21	21	0	0	0	0	0	0	0	0
16	21	13	34	16	0	0	0	0	0	0	0	21
17	47	36	52	0	0	0	0	0	0	0	20	37
18	26	42	65	0	0	0	0	0	0	0	32	0
19	13	57	60	26	0	0	0	0	0	0	0	-
20	17	39	32	31	0	0	0	0	0	0	0	-
21	14	62	23	14	0	0	0	0	0	0	0	0
22	52	46	15	20	0	0	0	0	0	0	0	-
23	19	38	20	16	0	0	0	0	0	0	0	-
24	16	14	0	27	0	0	0	0	0	0	0	17
25	12	21	0	32	0	0	0	0	0	0	0	52
26	0	32	13	0	0	0	0	0	0	0	0	47
27	0	15	19	0	0	0	0	0	0	0	0	34
28	23	15	0	14	0	0	0	0	0	0	0	15
29	15		0	0	0	0	0	0	0	0	0	36
30	0		14	0	0	0	0	0	0	0	0	20
31	24		0		0		0		0		0	48
Hujan Maks	52.0	71.0	65.0	35.0	49.0	0.0	0.0	0.0	0.0	0.0	70.0	-
Jml. Curah Hujan	466.0	848.0	522.0	390.0	121.0	0.0	0.0	0.0	0.0	0.0	178.0	-
Jml. Hari Hujan	22	25	22	19	5	0	0	0	0	0	5	-
Jml. data (1-15)	15	15	15	15	15	15	15	15	15	15	15	-
Jml. Hujan (1-15)	167.0	418.0	175.0	194.0	121.0	0.0	0.0	0.0	0.0	0.0	126.0	-
Jml. Data (16-31)	16	13	16	15	16	15	16	16	15	16	15	-
Jml. Hujan (16-31)	299.0	430.0	347.0	196.0	0.0	0.0	0.0	0.0	0.0	0.0	52.0	-
Tahunan	Hujan Maksimum		Jumlah Curah Hujan			Jumlah Hari Hujan			Hujan Ekstrim			
	-		-			-			255			

GRAFIK HUJAN (mm)

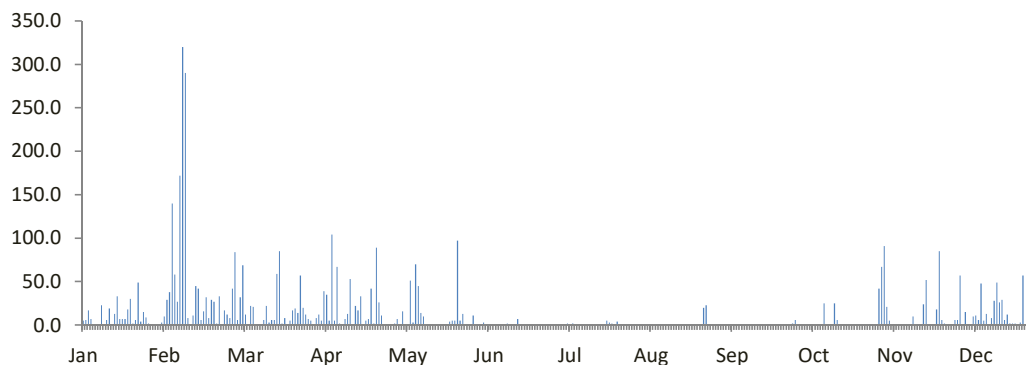


DATA CURAH HUJAN HARIAN

Nama Pos	: Ketenger-Rempoah	Provinsi	: Jawa Tengah
Nomor Pos	: 25	Kota/Kabupaten	: Banyumas
Jenis Alat	: Manual	Kecamatan	: Baturaden
Koordinat	: 7 24' 25.9" LS-109 5' 35.5" BT	Desa/Kampung	: Katenger
Elevasi	: -	Pengelola	: BBWS Serayu Opak
SWS - DAS	: Serayu	Didirikan	: Balai PSDA Serayu Citanday
Tahun Pendirian	: -	Tahun	: 2019

TANGGAL	BULAN (mm)											
	Jan	Feb	Mar	Apr	Mei	Jun	Jul	Ags	Sep	Okt	Nov	Des
1	5.0	10.0	6.0	12.0	7.0	0.0	0.0	0.0	0.0	0.0	42.0	6.0
2	6.0	29.0	32.0	5.0	1.0	1.0	0.0	1.0	0.0	0.0	67.0	57.0
3	17.0	38.0	69.0	39.0	16.0	3.0	0.0	1.0	0.0	0.0	91.0	1.0
4	7.0	140.0	12.0	35.0	0.0	0.0	1.0	0.0	0.0	0.0	21.0	15.0
5	1.0	58.0	1.0	5.0	0.0	0.0	2.0	0.0	0.0	0.0	5.0	0.0
6	1.0	27.0	22.0	104.0	51.0	0.0	1.0	0.0	0.0	1.0	1.0	1.0
7	0.0	172.0	21.0	5.0	3.0	0.0	2.0	0.0	0.0	0.0	0.0	10.0
8	23.0	320.0	0.0	67.0	70.0	0.0	0.0	0.0	0.0	1.0	0.0	11.0
9	0.0	290.0	0.0	2.0	45.0	0.0	0.0	0.0	0.0	0.0	0.0	6.0
10	6.0	8.0	0.0	0.0	14.0	1.0	0.0	0.0	0.0	0.0	0.0	48.0
11	19.0	1.0	6.0	7.0	10.0	0.0	0.0	0.0	0.0	25.0	0.0	5.0
12	0.0	11.0	22.0	13.0	1.0	2.0	0.0	0.0	0.0	0.0	0.0	13.0
13	13.0	45.0	3.0	53.0	1.0	1.0	0.0	0.0	0.0	0.0	1.0	1.0
14	33.0	42.0	6.0	1.0	0.0	0.0	0.0	0.0	0.0	0.0	10.0	8.0
15	7.0	6.0	6.0	22.0	0.0	0.0	0.0	0.0	0.0	25.0	0.0	28.0
16	7.0	16.0	59.0	17.0	0.0	7.0	0.0	0.0	0.0	6.0	1.0	49.0
17	7.0	32.0	85.0	33.0	0.0	0.0	0.0	0.0	0.0	1.0	1.0	26.0
18	18.0	8.0	2.0	1.0	0.0	0.0	0.0	0.0	0.0	0.0	24.0	29.0
19	30.0	29.0	8.0	5.0	0.0	0.0	1.0	0.0	0.0	0.0	52.0	6.0
20	2.0	27.0	1.0	7.0	1.0	0.0	5.0	0.0	0.0	0.0	0.0	12.0
21	6.0	2.0	5.0	42.0	4.0	0.0	3.0	0.0	0.0	0.0	0.0	2.0
22	49.0	33.0	17.0	2.0	5.0	0.0	2.0	0.0	0.0	0.0	1.0	2.0
23	4.0	1.0	19.0	89.0	5.0	0.0	0.0	0.0	0.0	0.0	18.0	2.0
24	15.0	17.0	14.0	26.0	97.0	0.0	4.0	0.0	0.0	0.0	85.0	0.0
25	9.0	12.0	57.0	11.0	5.0	0.0	0.0	1.0	0.0	0.0	6.0	3.0
26	2.0	8.0	20.0	1.0	13.0	0.0	0.0	20.0	0.0	0.0	2.0	57.0
27	0.0	42.0	12.0	0.0	1.0	0.0	0.0	23.0	0.0	0.0	0.0	1.0
28	0.0	84.0	7.0	0.0	1.0	0.0	0.0	0.0	0.0	0.0	0.0	10.0
29	0.0		5.0	0.0	0.0	0.0	0.0	0.0	2.0	0.0	0.0	4.0
30	0.0		0.0	2.0	11.0	0.0	0.0	0.0	6.0	0.0	6.0	6.0
31	3.0		8.0		0.0		0.0	0.0		0.0		3.0
Hujan Maks	49.0	320.0	85.0	104.0	97.0	7.0	5.0	23.0	6.0	25.0	91.0	57.0
Jml. Curah Hujan	290.0	1508.0	525.0	606.0	362.0	15.0	21.0	46.0	8.0	59.0	434.0	422.0
Jml. Hari Hujan	24	28	27	26	21	6	9	5	2	6	18	29
Jml. data (1-15)	15	15	15	15	15	15	15	15	15	15	15	15
Jml. Hujan (1-15)	138.0	1197.0	206.0	370.0	219.0	8.0	6.0	2.0	0.0	52.0	238.0	210.0
Jml. Data (16-31)	16	13	16	15	16	15	16	16	15	16	15	16
Jml. Hujan (16-31)	152.0	311.0	319.0	236.0	143.0	7.0	15.0	44.0	8.0	7.0	196.0	212.0
Tahunan	Hujan Maksimum		Jumlah Curah Hujan			Jumlah Hari Hujan			Hujan Ekstrim			
	320.0		4296.0			201			320			

GRAFIK HUJAN (mm)

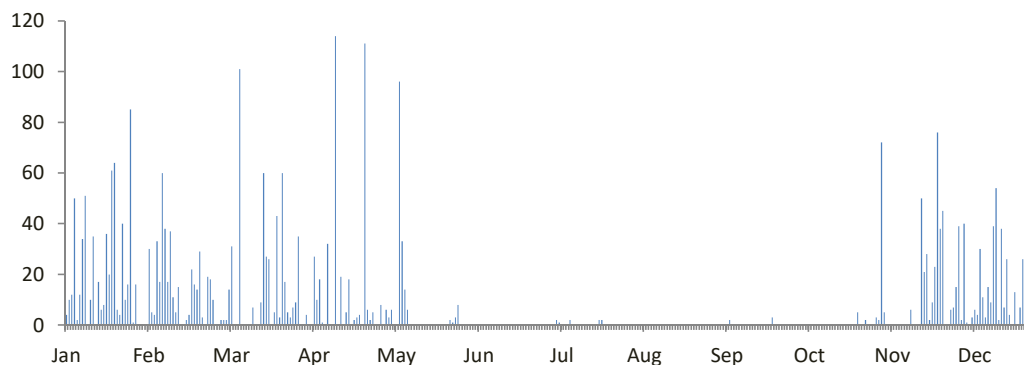


DATA CURAH HUJAN HARIAN

Nama Pos	: Bungkanel	Provinsi	: Jawa Tengah
Nomor Pos	: 33 x	Kota/Kabupaten	: Purbalingga
Jenis Alat	: Manual dan Otomatis	Kecamatan	: Karanganyar
Koordinat	: 7 17' 0.09" LS-109 23' 47" BT	Desa/Kampung	: Bungkanel
Elevasi	: + 150 m	Pengelola	: BPSDA Serayu Citanduy
SWS - DAS	: Serayu	Didirikan	: BBWS Serayu Opak
Tahun Pendirian	: -	Tahun	: 2019

TANGGAL	BULAN (mm)											
	Jan	Feb	Mar	Apr	Mei	Jun	Jul	Ags	Sep	Okt	Nov	Des
1	4	30	2	4	6	0	0	0	0	0	3	15
2	10	5	2	0	3	0	0	0	0	0	2	39
3	12	4	14	0	6	0	0	0	0	0	72	2
4	50	33	31	27	0	0	2	0	0	0	5	40
5	2	17	0	10	0	0	1	0	0	0	0	1
6	12	60	0	18	96	0	0	0	0	0	0	0
7	34	38	101	1	33	0	0	0	2	0	0	3
8	51	17	0	0	14	0	0	0	0	0	0	6
9	0	37	0	32	6	0	2	0	0	0	0	4
10	10	11	0	0	0	0	0	0	0	0	0	30
11	35	5	0	0	0	0	0	0	0	0	0	11
12	0	15	7	114	0	0	0	0	0	0	0	3
13	17	0	0	0	0	0	0	0	0	0	0	15
14	6	0	0	19	0	0	0	0	0	0	6	9
15	8	2	9	-	0	0	0	0	0	0	0	39
16	36	4	60	5	0	0	0	0	0	0	0	54
17	20	22	27	18	0	0	0	0	0	0	0	2
18	61	16	26	0	0	0	0	0	0	0	50	38
19	64	14	0	2	0	0	0	0	0	0	21	7
20	6	29	5	3	0	0	2	0	0	0	28	26
21	4	3	43	4	0	0	2	0	0	0	2	4
22	40	0	3	0	0	0	0	0	0	0	9	0
23	10	19	60	111	0	0	0	0	3	0	23	13
24	16	18	17	6	0	0	0	0	0	0	76	0
25	85	10	5	2	2	0	0	0	0	5	38	7
26	1	0	3	5	1	0	0	0	0	0	45	26
27	16	0	7	0	3	0	0	0	0	0	0	0
28	0	2	9	0	8	0	0	0	0	2	0	18
29	0		35	8	0	0	0	0	0	0	6	0
30	0		0	0	0	0	0	0	0	0	7	0
31	0		0		0		0		0			-
Hujan Maks	85	60	101	-	96	0	2	0	3	5	76	-
Jml. Curah Hujan	610	411	466	-	178	0	9	0	5	7	393	-
Jml. Hari Hujan	25	23	20	-	11	0	5	0	2	2	16	-
Jml. data (1-15)	15	15	15	-	15	15	15	15	15	15	15	-
Jml. Hujan (1-15)	251	274	166	-	164	0	5	0	2	0	88	-
Jml. Data (16-31)	16	13	16	-	16	15	16	16	15	16	15	-
Jml. Hujan (16-31)	359	137	300	-	14	0	4	0	3	7	305	-
Tahunan	Hujan Maksimum		Jumlah Curah Hujan			Jumlah Hari Hujan			Hujan Ekstrim			
	-		-			-			217			

GRAFIK HUJAN (mm)

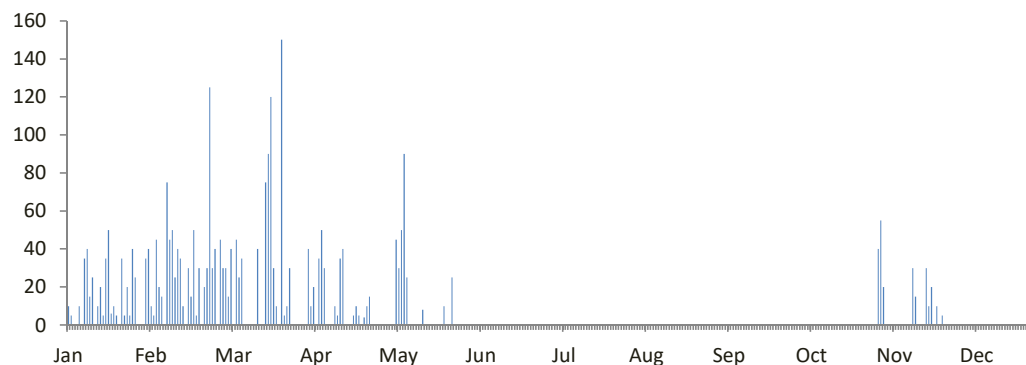


DATA CURAH HUJAN HARIAN

Nama Pos	: DPU Purbalingga, Kantor Ranti	Provinsi	: Jawa Tengah
Nomor Pos	: 35 c	Kota/Kabupaten	: Purbalingga
Jenis Alat	: Manual	Kecamatan	: Kali Gondang
Koordinat	: 7 23' 14" LS-109 20' 43" BT	Desa/Kampung	: Kali Kajar
Elevasi	: -	Pengelola	: Balai PSDA Serayu Citanduy
SWS - DAS	: Serayu	Didirikan	: BBWS Serayu Opak
Tahun Pendirian	: -	Tahun	: 2019

TANGGAL	BULAN (mm)											
	Jan	Feb	Mar	Apr	Mei	Jun	Jul	Ags	Sep	Okt	Nov	Des
1	10	10	30	40	0	0	0	0	0	0	40	-
2	5	5	15	10	0	0	0	0	0	0	55	-
3	0	45	40	20	0	0	0	0	0	0	20	-
4	0	20	0	0	45	0	0	0	0	0	0	-
5	10	15	45	35	30	0	0	0	0	0	0	-
6	0	0	25	50	50	0	0	0	0	0	0	-
7	35	75	35	30	90	0	0	0	0	0	0	-
8	40	45	0	0	25	0	0	0	0	0	0	-
9	15	50	0	0	0	0	0	0	0	0	0	-
10	25	25	0	0	0	0	0	0	0	0	0	-
11	0	40	0	10	0	0	0	0	0	0	0	-
12	10	35	0	5	0	0	0	0	0	0	0	-
13	20	10	40	35	0	0	0	0	0	0	0	-
14	5	0	0	40	8	0	0	0	0	0	30	-
15	35	30	0	0	0	0	0	0	0	0	15	-
16	50	15	75	0	0	0	0	0	0	0	0	-
17	6	50	90	0	0	0	0	0	0	0	0	-
18	10	5	120	5	0	0	0	0	0	0	0	-
19	5	30	30	10	0	0	0	0	0	0	30	-
20	0	0	10	5	0	0	0	0	0	0	10	-
21	35	20	0	0	0	0	0	0	0	0	20	-
22	5	30	150	4	10	0	0	0	0	0	0	-
23	20	125	5	10	0	0	0	0	0	0	10	-
24	5	30	10	15	0	0	0	0	0	0	0	-
25	40	40	30	0	25	0	0	0	0	0	5	-
26	25	0	0	0	0	0	0	0	0	0	0	-
27	0	45	0	0	0	0	0	0	0	0	0	-
28	0	30	0	0	0	0	0	0	0	0	0	-
29	0		0	0	0	0	0	0	0	0	0	-
30	35		0	0	0	0	0	0	0	0	0	-
31	40		0	0	0	0	0	0	0	0	0	-
Hujan Maks	50.0	125.0	150.0	50.0	90.0	0.0	0.0	0.0	0.0	0.0	55.0	-
Jml. Curah Hujan	486.0	825.0	750.0	324.0	283.0	0.0	0.0	0.0	0.0	0.0	235.0	-
Jml. Hari Hujan	23	24	16	16	8	0	0	0	0	0	10	-
Jml. data (1-15)	15	15	15	15	15	15	15	15	15	15	15	-
Jml. Hujan (1-15)	210.0	405.0	230.0	275.0	248.0	0.0	0.0	0.0	0.0	0.0	160.0	-
Jml. Data (16-31)	16	13	16	15	16	15	16	16	15	16	15	-
Jml. Hujan (16-31)	276.0	420.0	520.0	49.0	35.0	0.0	0.0	0.0	0.0	0.0	75.0	-
Tahunan	Hujan Maksimum		Jumlah Curah Hujan			Jumlah Hari Hujan			Hujan Ekstrim			
	-		-			-			170			

GRAFIK HUJAN (mm)



DATA CURAH HUJAN HARIAN

Nama Pos	: Sumpiuh	Provinsi	: Jawa Tengah
Nomor Pos	: 51	Kota/Kabupaten	: Banyumas
Jenis Alat	: Manual	Kecamatan	: Sumpiuh
Koordinat	: 7 36' 32.6" LS-109 21' 54.8" BT	Desa/Kampung	: Sumpiuh
Elevasi	: + 21 m	Pengelola	: BBWS Serayu Opak
SWS - DAS	: Serayu	Didirikan	: Balai PSDA Serayu Citanday
Tahun Pendirian	: -	Tahun	: 2019

TANGGAL	BULAN (mm)											
	Jan	Feb	Mar	Apr	Mei	Jun	Jul	Ags	Sep	Okt	Nov	Des
1	0	0	0	0	0	0	0	0	0	0	0	0
2	0	0	22	0	0	0	0	0	0	0	35	0
3	22	3	64	0	0	0	0	0	0	0	64	11
4	0	0	0	4	0	0	0	0	0	0	0	38
5	18	0	3	0	0	0	0	0	0	0	0	0
6	0	0	7	0	0	5	0	0	0	0	0	0
7	0	101	21	0	0	0	0	0	0	0	0	0
8	0	73	0	0	0	0	0	0	0	0	0	0
9	6	0	0	0	0	0	0	0	0	0	0	0
10	20	9	0	0	0	0	0	0	0	0	0	0
11	25	55	13	0	0	0	0	0	0	0	22	18
12	5	0	0	0	0	0	0	0	0	0	0	0
13	0	0	13	0	0	0	0	0	0	0	0	0
14	38	27	0	10	0	0	0	0	0	0	0	0
15	90	0	61	0	0	16	0	0	0	0	20	0
16	89	15	29	15	0	0	0	0	0	0	0	0
17	91	36	54	0	0	0	0	0	0	0	0	12
18	0	0	83	0	0	0	0	0	0	0	0	4
19	44	0	0	0	0	0	0	0	0	0	0	0
20	0	13	0	0	0	0	0	0	0	0	0	0
21	5	15	0	0	0	0	0	0	0	0	0	0
22	17	20	7	0	0	0	0	0	0	0	0	0
23	43	23	25	0	15	0	0	0	0	0	22	0
24	42	8	0	0	0	0	0	0	0	0	0	0
25	0	14	0	0	0	0	0	0	0	0	0	0
26	7	0	51	0	0	0	0	0	0	0	0	0
27	0	5	0	0	0	0	0	0	0	0	20	15
28	10	15	0	0	0	0	0	0	0	0	0	22
29	0		0	0	0	0	0	0	0	0	0	0
30	0		0	0	0	0	0	0	0	0	0	0
31	0		0	0	0	0	0	0	0	0	0	0
Hujan Maks	91	101	83	15	15	16	0	0	0	0	64	38
Jml. Curah Hujan	572	432	453	29	15	21	0	0	0	0	183	120
Jml. Hari Hujan	17	16	14	3	1	2	0	0	0	0	6	7
Jml. data (1-15)	15	15	15	15	15	15	15	15	15	15	15	15
Jml. Hujan (1-15)	224	268	204	14	0	21	0	0	0	0	141	67
Jml. Data (16-31)	16	13	16	15	16	15	16	16	15	16	15	16
Jml. Hujan (16-31)	348	164	249	15	15	0	0	0	0	0	42	53
Tahunan	Hujan Maksimum			Jumlah Curah Hujan			Jumlah Hari Hujan			Hujan Ekstrim		
	101.0			1825.0			66			168		

GRAFIK HUJAN (mm)

